

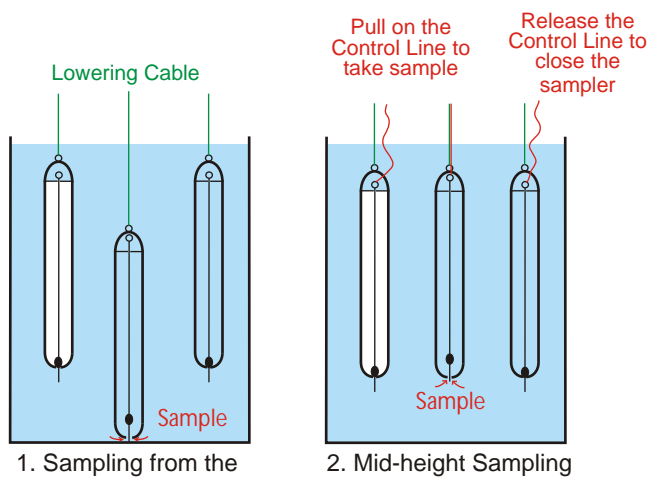
Bomb Sampler *Pro*

The Best Selling Heavy Duty Liquid Sampler

The Bomb Sampler Pro is an excellent sampler for both chemical and environmental sampling. Its unique double action means it can sample from a set distance from the bottom of a container or alternatively at a mid point in a container or well for example.

Operation 1 The Bomb Sampler Pro is lowered until the plunger assembly touches the bottom of the container. As the plunger assembly is pushed up the sample is able to enter the Bomb Sampler.

Operation 2 The plunger can be activated, at any depth, when the operator pulls on the control line.



NEXT DAY
DELIVERY

Part No.	Nominal Volume	Material	Dimensions (diameter x length)	Ex Rated
5072A-500	500ml	Nickel plated brass	57 x 430mm	Yes (use correct reel & Cable)
5072B-500	500ml	316 Stainless steel	63 x 280mm	No

Please see below for suitable hand reels and cables

Hand Reel & Cables

Hand reels and cables are essential accessories when using Bomb Samplers. The standard heavy duty hand reel is suitable for most situations. However if you are using the sampler in an Ex rated environment use the Hand Reel Ex with the copper cables.

NEXT DAY
DELIVERY

Part No.	Description
5070D-04	Standard Heavy Duty Hand Reel - made from PP
5070D-05	Ex Hand Reel - for Ex use rated environments. Made from conductive plastic. Supplied with earthing leads and clip. Use with copper cable
5070D-10	Cable - PTFE coated stainless. 10m
5070D-25	Cable - PTFE coated stainless. 25m
5070D-50	Cable - PTFE coated stainless. 50m
5070P-10	Cable - Polypropylene - 10m
5070P-25	Cable - Polypropylene - 25m
5070P-50	Cable - Polypropylene - 50m
5070C-10	Cable - Copper. 10m
5070C-25	Cable - Copper. 25m
5070C-50	Cable - Copper. 50m



Ex Hand Reel - complete with earthing leads

Bomb Sampler Bottle

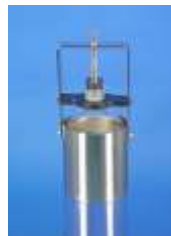
With Removable Glass Bottle

An ideal liquid sampler for most common liquids including water, oils, sludge etc.

- Manufactured from spark suppressant brass
- Bottle can be easily removed using patented click system
- 130mm diameter. 300mm high. 3 kg weight

Operation

Lower samplers into liquid. Pull reel to lift stopper. This allows liquid to flow into the glass bottle. Remove sampler and remove bottle.



Part No.	Volume	Material
5073A-1000	1000ml	Nickel plated brass, glass

See overleaf for cables and reels

Bomb Sampler Ex

Suitable for flammable liquids

When sampling flammable liquids it is essential that you use equipment that has been specially designed for the environment. The Bomb Sampler Ex is ideal for this task.

- Manufactured from spark suppressant brass

Operation is simple. Lower samplers into liquid. Pull cable to open lid



Part No.	Volume	Material
5072A-1000	1000ml	Nickel plated brass

See overleaf for cables and reels



Re-Usable Bailers

Ideal for sampling liquids from containers and wells etc. Primarily used in environmental and chemical sampling. Made from high quality FEP.

Material: FEP construction



Part No.	Volume	Outside Diameter
5075A-350	350ml	46mm
5075A-700	700ml	46mm
5075A-1050	1050ml	46mm

See page 51 for cables and reels

